

Shutterstile Mounting Instructions for Masonry Walls

Don't be fooled by the length of these instructions. We've tried to cover every contingency. Once you've installed the first shutter, it only takes about 15 minutes to install each additional pair. PLEASE READ ALL OF THE INSTRUCTIONS BEFORE BEGINNING.

Tools Needed:

- power screwdriver w/ phillips bit and drill bits
- hand screwdriver w/ phillips bit
- Tapcon® drill bit
- tape measure
- pencil or felt tip marker
- square
- hammer drill (optional, but very helpful)

Materials Needed:

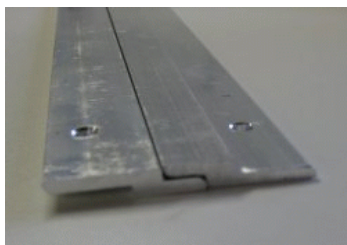
- shutters
- Shutterstile Z-bar mounting bracket kits
- Tapcon® fasteners (at least 2 for each set of brackets — from your local hardware store)
- washers (at least 6 for each set of brackets — stainless steel, sized to fit the Tapcon® screws)
- caulk
- blue painter's tape (optional, but helpful)

For most masonry walls, the bracket can be attached directly to the wall using Tapcon® fasteners or equivalent. These fasteners are available at most hardware and home improvement stores.

Tapcon® is a registered trademark of ITW Buildex (<http://www.itwbuildex.com>)



Tapcon® fastener for masonry



set of z-bar mounting brackets

The mounting system consists of two identical interlocking brackets. The upper bracket is mounted to the shutter with the drilled edge facing up, and the lower bracket mounts to the wall with the drilled edge facing down.

With the help of a friend, place the shutter up against the wall in position. Place a mark on the wall even with the top of the shutter on the inside corner.



mark top of shutter on wall



measure down 9 inches

Remove the shutter from the wall. If your shutters have our replaceable tile panels, hold a bracket against the wall approximately 9 inches below the mark. For all other shutters, hold a bracket against the wall such that the top edge of the bracket is at least 1-1/4 inches below the mark. Position the inside edge of the bracket about 1/2 inch away from the location where the inside edge of the shutter will be. Check to see that the holes in the bracket are no closer than an inch from any mortar joint. If necessary, move the bracket vertically to avoid horizontal mortar joints. If one or both of the holes in the bracket are too close to a vertical mortar joint, it will be necessary to drill an additional hole in a more suitable position on the bracket.



adjust to avoid mortar joints



drill hole closest to window for Tapcon®

Once you have found the best position for the bracket, place a mark on the wall at the location of the hole in the bracket that is closest to the window. Drill a hole in the masonry at this location using the correct drill bit for the size Tapcon fasteners you have purchased [suitable drill bits are available where you purchased the Tapcon fasteners]. [Hint: It's a lot easier to drill holes in masonry with a hammer drill. If you don't already have one, you can probably find an inexpensive off-brand for less than \$30 at your local discount store. A hammer drill will drill as many as ten holes in the time it takes you to drill one hole with a conventional drill. And the bits last much longer too.] Place a dab of caulk in the hole to prevent water infiltration. Then screw the bracket to the wall, using at least three washers between the bracket and the wall to prevent the accumulation of water and debris behind the bracket.



square bracket to window

Place a framing square on the wall, with one edge of the square against the trim or window opening and the other edge along the bottom of the bracket. Mark the position of the second screw hole, then drill and attach using caulk and washers as above.



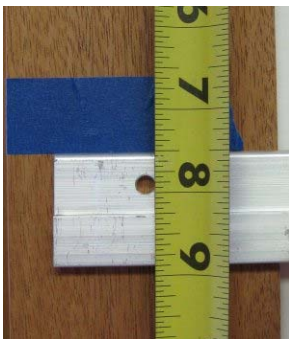
bottom bracket 7 inches up, then adjust to avoid mortar joints

Using the same procedure, install a second bracket on the wall at about 7 inches above the desired position of the bottom of the shutter. [Note: the position of the bottom bracket is less critical. For louvered or mission style shutters, you may want to move the bracket lower so that it is hidden behind the bottom frame rail.] For Koma PVC shutters that are over 44 inches tall, or wood shutters that are over 66 inches tall, we recommend that you install a third bracket in the approximate center of the shutter.



measure to top of mating brackets

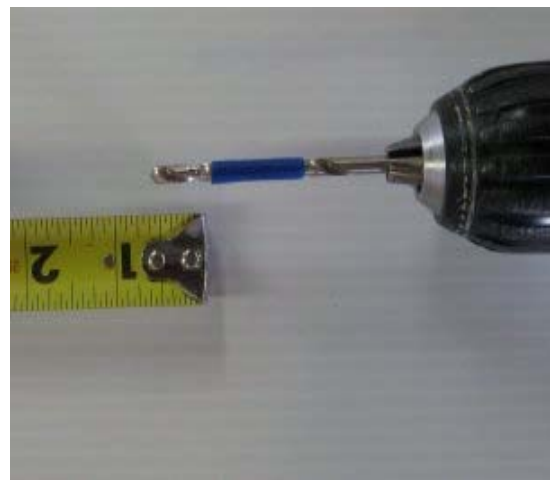
Now place a mating bracket in position on each of the wall brackets. Measure the location of the top of each of these mating brackets from the reference mark at the top of the shutter position.



use painters tape to position shutter brackets

Transfer each of these measurements to the back of the shutter along both edges [Hint: you can use a piece of blue painters tape to mark the position instead of marking the shutter directly]. Place a bracket in position at the uppermost marks, centered from side to side. Mark the position of the two holes.

Drill a 1/8 inch hole at each location, taking care not to drill through to the face of the shutter [Hint: you can use blue painters tape as a depth gauge. Simply wrap some tape around the drill bit, 3/4 inch from the tip, and drill until the tape contacts the shutter]. Place a 1/4 inch washer between the bracket and the shutter at each screw hole and install the screws. Hand tighten to avoid stripping.



use painters tape as a drill depth gauge



The process is the same for the remaining brackets, except that only the top bracket should be aligned with the mark. Lower brackets should be positioned approximately 1/8 of an inch above the corresponding mark. This allows for expansion without risk of the shutter lifting off of the top bracket.

attach remaining bracket(s) 1/8 inch above measurement

You can now hang the shutter on the wall brackets [if your shutters have our replaceable tile panels, it's easiest to remove the panel before placing the shutter on the wall]. For additional protection against high winds and passersby who might covet your shutters, we've come up with a simple security device. If your shutters have our replaceable tile panels, with the panel removed, simply feed the provided cable tie behind the lower bracket and over the top of the upper bracket in the panel opening. Pull the tie snug, but not too tight. For all other shutters, loop the cable tie behind and under the wall bracket before placing the shutter on the wall, then feed one end of the tie between the shutter and the bracket as you lower the shutter in position [if you find it difficult to feed the tie between the bracket and the shutter, it might help to remove the bracket from the shutter and add an additional washer behind the bracket at each screw location]. Pull the tie tight from the top. Clip any excess off the cable tie.

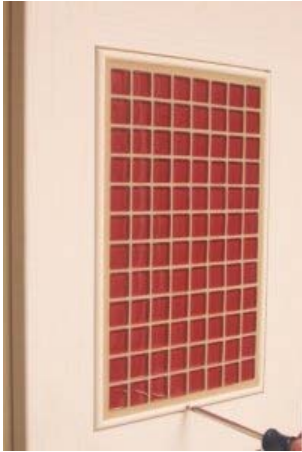


hang shutter and secure w/ cable tie

Finally, install the panels in your shutters following the instructions under “Installing Our Replaceable Tile Panels”.

Installing Our Replaceable Tile Panels

Panel installation is quick and easy. Simply insert the lip at the top of the panel into the groove in the bottom of the upper rail (see the accompanying figure). Simultaneously, lift up on the panel and push the bottom of the panel into the opening such that it rests on the two rubber bumpers on the bottom rail. Insert the stainless steel screw through the hole in the bottom trim piece and hand tighten. Take care not to over tighten. The screw need only be snug. Repeat the process for each additional panel.



Step One: loosen mounting screw



Step Two: lift panel out and down



Step Three: insert new panel and tighten screw

Should you have any questions about mounting your shutters, please feel free to contact us.

Shutterstile LLC
PO Box 647
Montross, VA 22520
804-493-1111
www.shutterstile.com